



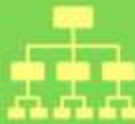
DAILY QUIZ September-2018

ENERGY & ENVIRONMENT

TEST SERIES ESE 2019 GS&APTITUDE



Integrated with
the study plan



Individual and
Cumulative Tests



Detailed
Solutions



Simulating Actual
Exam Environment



Detailed Post
Exam Analysis

Registrations are now open

testseries.adapala-academy.com

1. Consider the following statements with respect to Ocean mean temperature:

1. Assertion: The ocean mean temperature (OMT) has better ability to predict Indian monsoon than the sea surface temperature(SST).
2. Reason: OMT exhibits large temperature fluctuations leads to better success in predicting above or below-average rainfall years

In the context of the above, which of these is correct?

- A. A is correct, and R is an appropriate explanation of A
- B. A is correct, and R is not an appropriate explanation of A
- C. A is correct but R is incorrect
- D. Both A and R are incorrect

Q2.Consider the following statements with reference to Western Ghats:

1. The Ministry of Environment Forest and Climate Change had accepted the Kasturirangan report for conservation of Western Ghats
2. It is a UNESCO World Heritage Site
3. It is one of the eight “hottest hotspots” of biological diversity in the world

Which of the above statements is/are correct?

- a. 1 and 2
- b. 2 and 3
- c. All of the above
- d. 1 and 3

Q3 The main causes for the deterioration of Himalayan springs are:

1. Poor water management
2. Reduced snowmelt
3. Multiple sources of pollution

Select the correct answer code:

- a. 1 and 2
- b. 2 and 3
- c. 1 and 3
- d. All of the above

Q4 Consider the following statements with respect to National River Linking Project:

1. The project aims to effectively manage water resources in India by linking Indian rivers by a network of reservoirs and canals
2. The project being implemented by National Water Development Agency

Which of the above statement is/ are correct?

- a. 1 Only
- b. 2 Only
- c. Both 1 and 2
- d. Neither 1 nor 2

Q5 Consider the below statements with respect to Pariwartan scheme:

1. It aims to warehouse stressed power projects under an asset management company in a bid to protect their value.
2. It will prevent the distress sale of power asset management company

Which of the above statements is/are correct?

- a. 1 Only
- b. 2 Only
- c. Both 1 and 2

d. Neither 1 nor 2

Q6 With reference to Integrated Development of Wildlife Habitats, consider the below statements:

1. The Scheme consists of Project Tiger, Development of Wildlife Habitats and Project Elephant
2. The scheme would address the human wildlife conflict
3. The scheme would generate employment opportunities

Which of above statements is/are correct?

- a. 1 and 2
- b. 2 and 3
- c. All of the above
- d. 1 and 3

Q7 The DMH-11 which is recently in the news is a:

- a. Genetically Modified brinjal
- b. Genetically Modified mustard
- c. Genetically Modified cotton
- d. None of the above

Q8 The Genetically Modified crops in India are regulated by:

- a. Global Environment Fund
- b. Ministry of Health and Family welfare
- c. Ministry of Chemicals and Fertilizers
- d. Genetic Engineering Appraisal Committee

Q9 The World's largest offshore wind farm being developed at:

- a. India
- b. Germany
- c. England
- d. USA

Q10 The Sustainable Development Goal 6 relates to:

- a. Clean water and sanitation
- b. Affordable and clean energy
- c. Zero Hunger
- d. Climate Action

Q11 Consider the below statements with respect to Global Sanitation Convention:

1. The Convention being organised by Ministry of Drinking Water and Sanitation
2. It aimed at sharing sanitation success stories and lessons across all participating countries

Which of the above statements is/are correct?

- a. 1 Only
- b. 2 Only
- c. Both 1 and 2
- d. Neither 1 nor 2

Q12 The Red List of Threatened Species is published by:

- a. United Nations

- b. World Bank
- c. United Nations Environment Programme
- d. International Union for the Conservation of Nature

Q13 India's first solar bicycle track corridor is coming up in:

- a. Mumbai
- b. Delhi
- c. Bengaluru
- d. Hyderabad

Q14 Consider the below statements with reference to Pondicherry shark:

1. The International Union for Conservation of Nature (IUCN) has listed the Pondicherry shark as Critically Endangered.
2. It is protected under the provisions of the Wildlife(Protection) Act

Which of the above statements is/are correct?

- a. 1 Only
- b. 2 Only
- c. Both 1 and 2
- d. Neither 1 nor 2

Q15 With reference to OLAP, which of the below statements is/are correct?

1. Under the policy, companies are allowed to put in an expression of interest (Eoi) for prospecting of oil and gas in an area without waiting for government bidding
2. It enable a faster survey and coverage of the available geographical area

Select the correct answer code:

- a. 1 Only
- b. 2 Only
- c. Both 1 and 2
- d. Neither 1 nor 2

Q16 The main sources of greenhouse gas emissions are:

1. The transportation sector
2. Burning fossil fuels for energy
3. Agriculture

Which of the above statements is/are correct?

- a. 1 and 2
- b. 2 and 3
- c. 1 and 3
- d. All of the above

Q17 Consider the below statements with respect to Apsara – U Reactor:

1. It is an indigenously made reactor using plate type dispersion fuel elements made of Low Enriched Uranium (LEU)
2. It is used extensively for research in nuclear physics, material science and radiation shielding

Which of the above statements is/are correct?

- a. 1 Only
- b. 2 Only
- c. Both 1 and 2

d. Neither 1 nor 2

Q18 With reference to e-cigarettes, consider the following statements:

1. It works by heating a liquid to generate an aerosol
2. The health risks of e-cigarettes are uncertain
3. Recently Tamil Nadu state government prohibited the sale of e-cigarettes

Select the INCORRECT answer:

- a. 1 and 2
- b. 2 and 3
- c. All of the above
- d. None of the above

Q19 With reference to Policy Framework to Promote and Incentivize Enhanced Recovery Methods for Oil and Gas, which of the following statements is / are correct?

1. It aims to improve recovery factor of existing hydrocarbons reserves
2. To build a supportive ecosystem through academic and research institutes, industry-academia collaboration.
3. To facilitate induction of new, innovative and cutting-edge technology

Select the correct answer code below:

- a. 1 and 2
- b. 2 and 3
- c. All of the above
- d. 1 and 3

Q20 Statement I: Atmospheric aerosols affect the monsoon pattern

Statement II: The aerosols increase the land surface temperature

Codes:

- a. Both Statement(I) and Statements(II) are individually true and Statement(II) is the correct explanation of Statement(II)
- b. Both Statement(I) and Statement(II) are individually true but Statement(II) is not the correct explanation of Statement(I)
- c. Statement (I) is true but Statement (II) is false
- d. Statement(I) is false but Statement (II) is true

Q21 The diurnal temperature difference is between

- A. Maximum and minimum temperatures in an year
- B. Summer average temperature and winter average temperature
- C. Maximum and minimum temperatures in a month
- D. Maximum and minimum temperatures in a day

Q22 The energy star labelling in India is done by

- A. The energy institute
- B. The energy efficiency services limited
- C. The bureau of energy efficiency
- D. Renewable energy corporation of India

Q23 Find the correct statements regarding use of biofuels in aviation

1. It aims to cut down on carbon emissions
2. It aims to cut down the oil imports

Select the correct code

- A. 1 only
- B. 2 only
- C. Both 1&2
- D. None of above

Q24 Dam rehabilitation and Improvement Project(DRIP) is implemented with the help of

- A. The Dutch government
- B. The World Bank
- C. The UN-Environment
- D. The World Wide Fund for Nature

Q25 Tropical cyclones

1. Forms only over warm waters
2. Coriolis force should be minimum for its formation
3. They can sustain both on land and water

Select the correct code

- A. 1 only
- B. 1&2
- C. 2&3
- D. 3 only

Q26 Consider the following statements with reference to Tx2 programme:

1. The programme aims to double the world tiger population by 2022
2. Nepal is set to become the first country in the world to double its tiger population under the program

Which of the above statements is/ are correct?

- a. 1 Only
- b. 2 Only
- c. Both 1 and 2
- d. Neither 1 nor 2

Q27 Which country launched World's first hydrogen-powered passenger train?

- a. France
- b. China
- c. Russia
- d. Germany

Q28 Consider the following statements regarding Ramsar Convention.

1. It is an Intergovernmental Treaty on conservation of wetlands
2. India has not acceded to this treaty.

Which of the statements given above is/are INCORRECT?

- a. 1 Only
- b. 2 Only
- c. Both 1 and 2
- d. Neither 1 nor 2

Q29 With reference to WAYU- Air Pollution Mitigation Device, which of the below statements is/are correct?

1. The device has filters for Particulate Matter removal and activated carbon

2. The device developed by Council of Scientific and Industrial Research National Environmental Engineering Research Institute

Select the correct answer code:

- a. 1 Only
- b. 2 Only
- c. Both 1 and 2
- d. Neither 1 nor 2

Q30 Consider the below statements with reference to black spotted turtles:

- 1. They are classified as vulnerable by the IUCN.
- 2. The black spotted turtle or spotted pond turtle is native to South Asia.
- 3. China accounts for highest number of black spotted turtles seizure.

Which of the above statements is/are correct?

- a. 2 and 3
- b. 1 and 2
- c. All of the above
- d. 1 and 3

Q31 Consider the following statements with reference to SATAT initiative:

- 1. The initiative is aimed at make available compressed Bio-Gas in the market for use in automotive fuels
- 2. To bring down dependency on crude oil imports
- 3. To generate additional revenue source for farmers

Select the correct answer code:

- a. 1 and 2
- b. 2 and 3
- c. 1 and 3
- d. All of the above

IES GS Video Lectures



**Study from
anywhere anytime**



**Extensive
syllabus coverage**



**One year
doubts support**



Money back guarantee



Free online test series

more details at www.iesgeneralstudies.com

adapala-academy.com



ESE Lectures



GATE Lectures



Discussion Forum



Online Test Series